

## Perfect register, simplified

Register Guidance with MultiCam | for Commercial Web Offset Printing

Achieve salable copies in a minimum number of press impressions from startup. Extraordinary color-to-color and folder registration combined with the world's fastest and best-selling register camera delivers reduced makeready and improved performance.

# Accurate, efficient control for exceptional quality

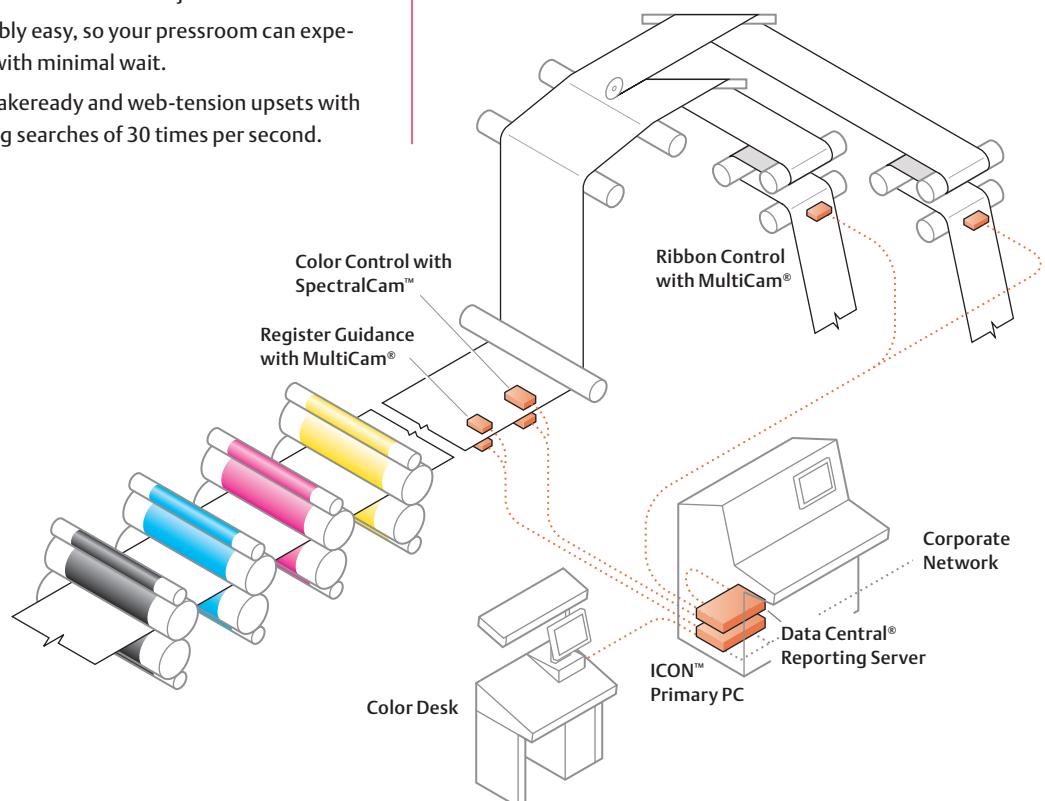
Register Guidance with MultiCam is a closed-loop color-to-color register control system designed to work on the ICON™ integrated platform with other Baldwin Vision Systems products—including the Ribbon Control with MultiCam, Color Control with SpectralCam™, and Data Central® Reporting.

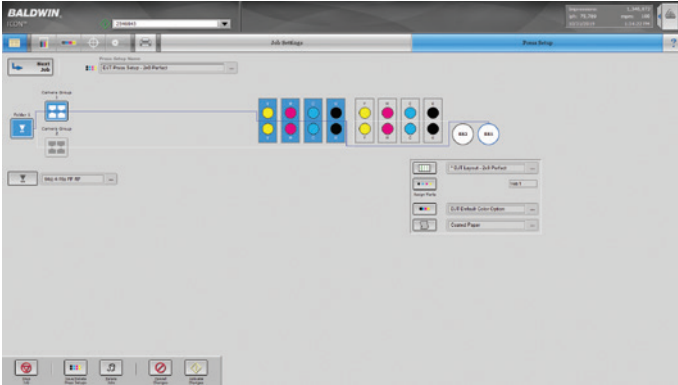
The revolutionary Register Guidance with MultiCam combines unmatched color-register performance with the flexibility needed to meet the most demanding press requirements. Plus, you'll benefit from breakthrough camera technology that's adaptable, affordable, and virtually maintenance free. You'll achieve salable copies in a minimum number of press impressions from startup—reducing waste, increasing savings, and maximizing print quality.

## Features and Benefits

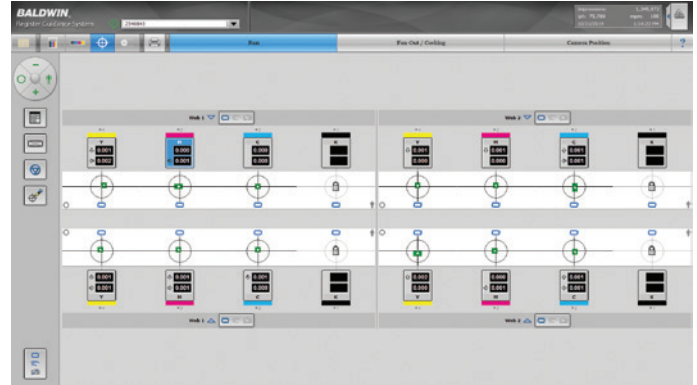
- Quicken makeready, minimize errors, and reduce waste. Camera functions can be preset with information from the press controls themselves or from the ICON setup library—including mark position information.
- MultiCam provides both circumferential and lateral color register control in a compact, low profile system.
- Greatly streamline job setup by giving your operators instant access to preset parameters for all their saved jobs.
- Operator training is incredibly easy, so your pressroom can experience maximum benefits with minimal wait.
- Find marks faster during makeready and web-tension upsets with MultiCam's industry-leading searches of 30 times per second.

- MultiCam identifies register marks as small as 0,36 mm (0.014 in) as well as legacy RGS, Autotron™, and other manufacturers' marks at speeds up to 17,8 M/sec (3,500 ft/min).
- It's compatible with our motorized camera transport technology, allowing you to further streamline system setup.
- Share a single Operator Control Station for all your Baldwin Vision Systems controls, and streamline your operations using the ICON integrated platform.
- Automatic front-to-back register control precisely aligns the printed image on both surfaces of the web, ensuring accurate placement on both sides of the page after trimming.
- Quantify your high quality for customers, and monitor and improve the performance of your presses with Data Central's Performance Reporting Module™. With relevant, powerful data at your fingertips, you'll boost productivity and performance, reduce make-goods, minimize rebates and reruns—and optimize your profitability.
- This system accommodates and automates many special applications, including direct printing.
- To further automate and streamline your printing processes, you can complement your Register Guidance with MultiCam with the Ribbon Control with MultiCam—for ribbon and cutoff control.
- Minimize scanner cleaning with MultiCam's active OptiGuard™, which uses compressed air to keep the camera lens clean.





The ICON platform user interface is designed to be easy-to-use, requiring very little operator training, and streamlining job setup.



Register Guidance with MultiCam displays all print units at a glance, and the system automatically keeps your print run within established tolerances.

## Optional Software Solutions

Flexible and modular, our systems and software solutions are easily integrated. You can incorporate only the features you need today without compromising your ability to add functionality in the future.

### Fan-Out Control

As your web grows in size, the more issues you're likely to have with fan-out errors. Baldwin Vision Systems' fan-out control software automatically keeps your system in lateral register across the full width of the web throughout the entire run. Register control cameras mounted on both the gear and operator sides of the web capture even the tiniest shift in lateral register position and instantly make automatic corrections via an interface with the bustle devices. Inaccuracies that occur with the subjectivity of manual corrections are eradicated. Reworks are eliminated, makeready is faster and color fit is spot on.

### Cocking Control

Plate cocking errors also create quality issues and siphon off your operators' time and attention. Baldwin Vision Systems' cocking control solution automatically adjusts your system's cocking motors to realign circumferential register when plate cocking changes occur. One operator can program the system for the specific application and monitor the print run from the same operator control station as the rest of your ICON Platform control systems. No tools are required. Makeready is fast and easy. And the bottom line is smoother operation and unrivaled registration accuracy.

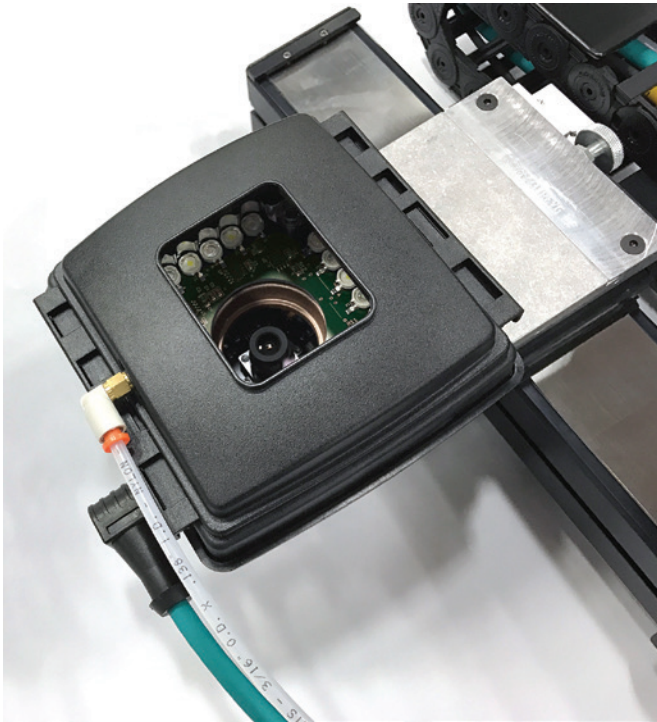
### Anti-Embossing

Blanket piling/embossing not only erodes print quality, but wastes ink and paper while cutting the life of your blanket. Baldwin Vision Systems' anti-embossing solution is the ideal way to compensate for print quality issues that arise from using thinner, lower quality paper—and normally require more frequent blanket washes. By automatically enabling the dot to print in different locations on the blanket, anti-embossing prevents piling/embossing issues while stabilizing dot gains across the web throughout the run. Print quality is improved with less ink build-up, and waste is dramatically reduced. You can maintain a normal blanket-wash cycle, increasing productivity and prolonging blanket life.

### Ink Guiding

A tiny shift in the image can create huge slitting problems! Valuable time is lost when your operator has to manually adjust the web to correct the error. And if the error goes unnoticed and printed product is slit in the wrong places, it can be costly both in waste and in the need for rework, not to mention the loss of a valued customer. Baldwin Vision Systems' ink-guiding solution eliminates the problem. It automatically senses the deviation and corrects the print-to-slitter register by adjusting the web guide. Quality is maintained, productivity improved and your customer stays happy.

# Perfect register, simplified



## OptiGuard

Minimize scanner cleaning with MultiCam's active OptiGuard, which uses compressed air to keep the lens clean from ink mist and dust—keeping maintenance to a minimum. No more lamp replacements!

- ◆
- ◆
- ◆ MultiCam identifies register marks as small as 0,36 mm (0.014 in) as well as legacy RGS, Autotron, and other manufacturers' marks at speeds up to 17,8 M/sec (3,500 ft/min).
- ◆
- ◆
- ◆
- ◆
- ◆
- ◆

## Specifications

### PERFORMANCE

Measurement resolution.....0.01mm  
 Maximum operating speed.....17,8 m/sec (3500 ft/min)  
 Maximum number of controlled units.....216  
 Maximum number of motors.....1080

### SYSTEM REQUIREMENTS

Voltage .....100V-240V +/-10%  
 Power consumption .....Varies, based on configuration  
 Frequency.....50 or 60 Hz  
 Phase .....Single Phase

### PROCESS TECHNOLOGIES

Camera sensor type .....Proprietary Area Array  
 Registration mark type .....Mini Marks Ahead & Across

### ENVIRONMENT

Temperature range.....0° - 55° C (32° - 131°F)  
 Maximum humidity .....95% non-condensing

### INTERFACE CAPABILITY

Supports most major press controls

### OPERATOR CONTROL STATION

Type .....Universal Touch Screen  
 Maximum number of operator control stations .....12  
 Operating System.....Microsoft® Windows®  
 Communications means .....Ethernet

### CERTIFICATIONS

Meets CE Standards  
 UL Approved

### OPTIONS - SOFTWARE

Phasing Control  
 Error Alarms  
 Ink Guiding (ink-to-slit registration)  
 Anti-embossing

### OPTIONS - HARDWARE

Motorized Bars  
 Multiple Encoders  
 OptiGuard, Active or Passive

## Contact

Email: [visionsolutions@baldwintech.com](mailto:visionsolutions@baldwintech.com)

[www.baldwinvisionsystems.com](http://www.baldwinvisionsystems.com)

## Follow

