

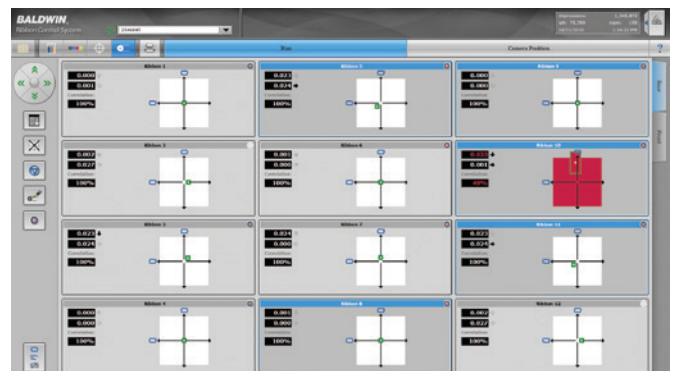
Quick makereadies, reduced waste, precise cutoff and fold register

Ribbon Control with MultiCam delivers unmatched precision across the full range of ribbon-control tasks—including everything from cutoff, print-to-cut, print-to-fold and crossover register to the most complex challenges.

Extraordinary color-to-color and folder registration combined with the world's fastest and best-selling register camera delivers reduced makeready and improved performance.

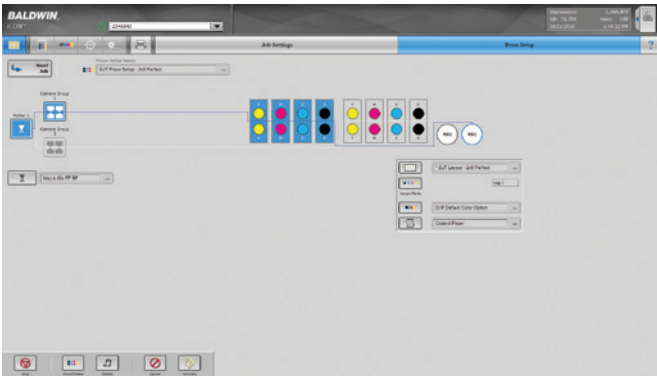
Features and Benefits

- Ribbon Control with MultiCam resides on the ICON™ platform, which allows all your Baldwin Vision Systems press controls to share a single, user-friendly interface.
- The ICON platform gives your operators instant access to preset parameters for all their saved jobs, greatly streamlining job setup.
- To minimize waste, Ribbon Control with MultiCam automatically makes angle-bar adjustments during startup, before ink even becomes visible.
- Standard capabilities include interfaces to equipment such as UV coaters, perforators, pattern gluers, folders, and rotary cutters.
- Options include ink-guiding cameras to enable print-to-slitter registration.
- Compact, low-profile system installs easily with minimal mounting and electrical hardware.
- MultiCam identifies register marks as small as 0,50 mm (0.020 in)—among the smallest in the industry.
- It's compatible with our motorized camera transport technology, allowing you to further streamline system setup.
- MultiCam searches for register marks at an industry-leading 30 times per second. One advantage: exceptional control during, and recovery from, web-tension upsets.
- You can incorporate only the features you need today without compromising your ability to add functionality in the future.
- Quantify your high quality for customers, and monitor and improve the performance of your presses with Data Central's Performance Reporting Module™. With relevant, powerful data at your fingertips, you'll boost productivity and performance, reduce make-goods, minimize rebates and reruns—and optimize your profitability.
- To further automate and streamline your printing processes, you can complement your Ribbon Control system with the Register Guidance with MultiCam for superb color-to-color register control.

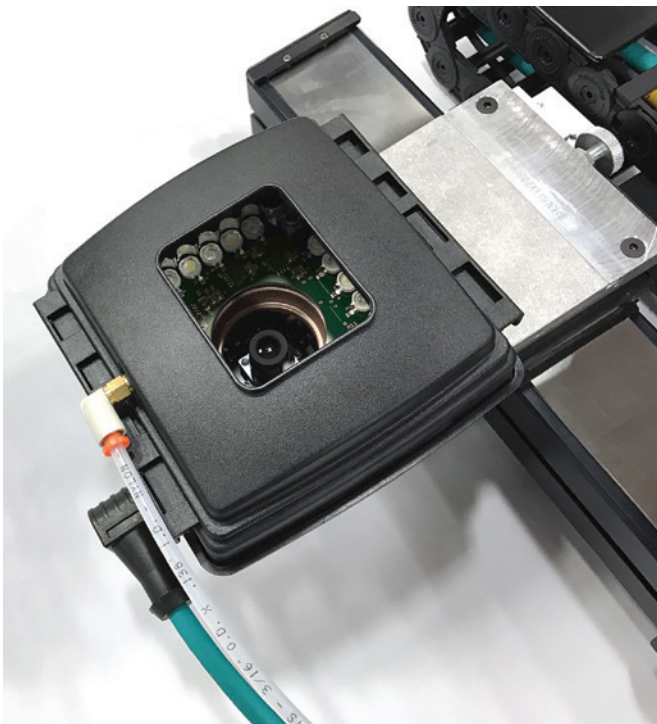


Ribbon Control with MultiCam displays all ribbons at a glance, and the system automatically keeps your print run within established tolerances.

Quick makereadies, reduced waste, precise cutoff and fold register



The ICON platform user interface is designed to be easy to use, requiring very little operator training, and streamlining job setup.



OptiGuard

Minimize scanner cleaning with MultiCam's active OptiGuard, which uses compressed air to keep the lens clean from ink mist and dust—keeping maintenance to a minimum. No more lamp replacements!

Specifications

PERFORMANCE

- Measurement resolution.....0.01mm
- Maximum operating speed..... 17,8 m/sec (3500 ft/min)
- Max. number of controlled units..... 48 ribbons at a time, 96 motors
- Maximum number of motors.....200

SYSTEM REQUIREMENTS

- Voltage100V-240V +/-10%
- Power consumption Varies, based on configuration
- Frequency..... 50 or 60 Hz
- PhaseSingle Phase

PROCESS TECHNOLOGIES

- Camera sensor typeProprietary Area Array
- Registration mark type Mark or pattern recognition; 3-dot mini mark, RGS V-I reference mark, or MultiCam reference mark

ENVIRONMENT

- Temperature range..... 0° - 55° C (32° - 131°F)
- Maximum humidity95% non-condensing

INTERFACE CAPABILITY

Supports most major press controls

OPERATOR CONTROL STATION

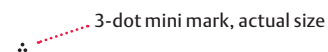
- Type Universal Touch Screen
- Maximum number of operator control stations 12
- Operating System..... Microsoft® Windows®
- Communications means Ethernet

CERTIFICATIONS

- Meets CE Standards
- UL Approved

OPTIONS

- Motorized Bars
- Multiple Encoders
- Ink Guiding (ink-to-slit registration)
- Compensator and angle bar motors
- OptiGuard, Active or Passive



Contact

Email: visionsolutions@baldwintech.com
www.baldwinvisionsystems.com

Follow

